

All Blues

Composer: Miles Davis

arr: C. Helmreich

Intro

flgh

12 A

18

B

26

34

C D 4 2

A⁷ D⁷ A D⁷ A A⁷ E⁷ #⁹

48

E 4 2 2

F⁷ #⁹ E⁷ #⁹ A⁷ D⁷ A D⁷ A A⁷ E⁷ #⁹ F⁷ #⁹ E⁷ #⁹ A⁷

63

Chorus

F 10 G H

81

89

Cadenza

All Blues

Composer: Miles Davis

arr: C. Helmreich

tp1

Intro

12 A Voc 12 B

28

34 C

39 D 12 E 4 flgh

59 to tp Chorus

64

69

73 G H Chorus 10

89 flgh rit.

All Blues

Composer: Miles Davis

arr: C. Helmreich

tp2

Intro

12 A Voc 12 B

28

34 C

39 D 12 E 4 flgh

58 to tp Chorus F

64

69

73 G H Chorus 10

89 flgh rit.

All Blues

Composer: Miles Davis

arr: C. Helmreich

tp3

Intro

12 A Voc 12 B

28

34 C

39 D 12 E 4 flgh

59 to tp Chorus

64

69

73 G H Chorus 10

89 flgh rit.

Detailed description of the musical score: The score is for a trumpet part in G major (two sharps) and 8/8 time. It begins with an 'Intro' section. Section A (measures 12-13) is a whole note chord. Section B (measures 14-15) contains eighth notes with an accent on the second measure. Section C (measures 34-35) features eighth notes with accents. Section D (measures 39-40) is a whole note chord. Section E (measures 41-42) is a whole note chord. Section F (measures 59-60) is a whole note chord. Section G (measures 73-74) is a whole note chord. Section H (measures 75-76) is a whole note chord. The Chorus (measures 61-72) consists of eighth notes with accents. The final section (measures 89-90) includes eighth notes with accents and a 'rit.' (ritardando) marking.

All Blues

Composer: Miles Davis

arr: C. Helmreich

Intro

tp4

12

A

Voc 12

B

28

34

C

39

D

12

E

4

flgh

59

to tp

Chorus

64

69

73

G

H

Chorus

10

89

flgh

rit.

All Blues

Composer: Miles Davis

arr: C. Helmreich

Intro

alto1

12 A Voc 12 B 2

29

34

C

39

D E 12 3 *mf*

56

3

61

F Chorus 3

64

2 3 3 3 3

69

3

73

G H Chorus 10

89

f rit.

All Blues

Composer: Miles Davis

arr: C. Helmreich

Intro

alto2

12 A Voc 12 B

29

34 C

39 D E

56

61 F Chorus

64

69

73 G H Chorus 10

89 rit.

Detailed description of the musical score: The score is written for alto saxophone in 9/8 time and A major. It begins with an 'Intro' section. Section A (measures 12-13) is marked 'Voc' and '12'. Section B (measures 14-18) features a melodic line with accents. Section C (measures 19-23) continues the melodic development. Section D (measures 24-28) includes a triplet. Section E (measures 29-33) features a triplet and a dynamic marking of 'mf'. Section F (measures 34-40) is the start of the 'Chorus', marked 'f', and contains several triplet figures. Section G (measures 41-45) is another 'Chorus' section, marked '10'. Section H (measures 46-50) continues the melodic line. The piece ends with a 'rit.' (ritardando) marking in measure 51.

All Blues

Composer: Miles Davis

arr: C. Helmreich

Intro

ten1

12 A Voc 12 B

27

33

C

38

D 12 E

55

60

F Chorus 3 3 3

64

69

73

G H Chorus 10

89

rit.

All Blues

Composer: Miles Davis

arr: C. Helmreich

Intro

ten2

27

33

38

55

60

64

69

73

89

All Blues

Composer: Miles Davis

arr: C. Helmreich

Intro

bari

12 A Voc 12 B

29

34 C

39 D E

12

56

mf

61 F Chorus

64

f

69

73 G H Chorus 10

89

rit. p

All Blues

Composer: Miles Davis

arr: C. Helmreich

tb1

Intro

12

A

Voc 12

B

29

34

C

39

D

12

E

55

F

60

Chorus

65

70

74

G

H

Chorus

10

89

rit.

Detailed description of the musical score: The score is for a tuba (tb1) in 6/8 time. It begins with an 'Intro' section (measures 1-12) consisting of a whole rest followed by a 12-measure rest. Section 'A' (measures 13-28) features a vocal line (Voc) with a 12-measure rest, followed by eighth notes and quarter notes. Section 'B' (measures 29-33) continues with eighth notes and quarter notes. Section 'C' (measures 34-38) includes eighth notes and quarter notes. Section 'D' (measures 39-43) starts with a 12-measure rest, followed by eighth notes and quarter notes. Section 'E' (measures 44-54) features eighth notes and quarter notes. Section 'F' (measures 55-59) includes eighth notes and quarter notes. Section 'G' (measures 60-64) is a 'Chorus' section with eighth notes and quarter notes. Section 'H' (measures 65-73) is another 'Chorus' section, starting with a 10-measure rest. The final section (measures 74-89) includes eighth notes and quarter notes, ending with a 'rit.' (ritardando) marking and a fermata.

All Blues

Composer: Miles Davis

arr: C. Helmreich

tb2

Intro

12

A

Voc 12

B

29

34

C

39

D

12

E

55

60

F

Chorus

65

70

74

G

H

Chorus

10

89

rit.

Detailed description of the musical score: The score is for a tuba 2 part in 6/8 time. It begins with an 'Intro' section (measures 1-12) consisting of a whole rest followed by a 12-measure rest. Section 'A' (measures 13-28) starts with a vocal line (Voc) for 12 measures, followed by a 12-measure rest, then a melodic line starting on G4 with an accent (^) and a dynamic marking of 'p'. Section 'B' (measures 29-33) continues the melodic line. Section 'C' (measures 34-38) features a melodic line with accents and a dynamic marking of 'p'. Section 'D' (measures 39-54) includes a 12-measure rest followed by a melodic line with accents and a dynamic marking of 'p'. Section 'E' (measures 55-59) continues the melodic line with accents and a dynamic marking of 'p'. Section 'F' (measures 60-64) is labeled 'Chorus' and features a melodic line with accents and a dynamic marking of 'p'. Section 'G' (measures 65-73) continues the melodic line with accents and a dynamic marking of 'p'. Section 'H' (measures 74-88) is labeled 'Chorus' and features a 10-measure rest. Section 'I' (measures 89-96) continues the melodic line with accents and a dynamic marking of 'p', ending with a 'rit.' (ritardando) marking and a fermata.

All Blues

Composer: Miles Davis

arr: C. Helmreich

tb3

Intro

12

A

Voc 12

B

29

34

C

39

D

12

E

55

F

60

Chorus

65

70

74

G

H

Chorus

10

89

rit.

All Blues

Composer: Miles Davis

arr: C. Helmreich

tb4

Intro

12

A

Voc 12

B

29

34

C

39

D

12

E

55

60

F

Chorus

65

70

74

G

H

Chorus

10

89

rit.

Detailed description of the musical score: The score is for a tuba 4 part in 6/8 time. It begins with an 'Intro' section (measures 1-12) featuring a half note G2, a whole note G2, and a half note G2. Section A (measures 13-28) starts with a whole note G2, followed by eighth notes G2-A2, G2-B2, and G2-A2. Section B (measures 29-33) continues with eighth notes G2-A2, G2-B2, and G2-A2. Section C (measures 34-38) features eighth notes G2-A2, G2-B2, and G2-A2. Section D (measures 39-54) starts with a whole note G2, followed by eighth notes G2-A2, G2-B2, and G2-A2. Section E (measures 55-59) continues with eighth notes G2-A2, G2-B2, and G2-A2. Section F (measures 60-73) is the 'Chorus' and features eighth notes G2-A2, G2-B2, and G2-A2. Section G (measures 74-78) features eighth notes G2-A2, G2-B2, and G2-A2. Section H (measures 79-88) is another 'Chorus' section with a 10-measure rest. The final section (measures 89-92) is marked 'rit.' and features eighth notes G2-A2, G2-B2, and G2-A2.

All Blues

Composer: Miles Davis

arr: C. Helmreich

Intro

piano

G⁷ C⁷ G

C⁷ G G⁷ D⁷ #⁹ Eb⁷ #⁹ D⁷ #⁹

11 Chorus 3 2

G⁷ C⁷ G C⁷ G G⁷ D⁷ #⁹

22 B 4 2

Eb⁷ #⁹ D⁷ #⁹ G⁷ C⁷ G C⁷ G G⁷ D⁷ #⁹ Eb⁷ #⁹ D⁷ #⁹

35 C 2 D 4 2

G⁷ C⁷ G C⁷ G G⁷

47 E 2 4 2

D⁷ #⁹ Eb⁷ #⁹ D⁷ #⁹ G⁷ C⁷ G C⁷ G G⁷ D⁷ #⁹ Eb⁷ #⁹ D⁷ #⁹

61 F Chorus 2 4 2

G⁷ C⁷ G C⁷ G G⁷ D⁷ #⁹ Eb⁷ #⁹ D⁷ #⁹

73 G H Chorus

G⁷ C⁷ G C⁷ G G⁷ D⁷ #⁹ Eb⁷ #⁹ D⁷ #⁹

78 3 2

C⁷ G C⁷ G G⁷ D⁷ #⁹ Eb⁷ #⁹ D⁷ #⁹ G⁷

89 rit.

G⁷ C⁷ G C⁷ G G⁷

All Blues

Composer: Miles Davis

arr: C. Helmreich

Intro

bass

3

G⁷ C⁷ G

8

D⁷ #⁹ Eb⁷ #⁹ D⁷ #⁹ G⁷ C⁷ G

A Chorus 3

21

D⁷ #⁹ Eb⁷ #⁹ D⁷ #⁹ G⁷ C⁷ G C⁷ G G⁷ D⁷ #⁹ Eb⁷ #⁹ D⁷ #⁹

B 4

35

G⁷ D⁷ #⁹ Eb⁷ #⁹ D⁷ #⁹ G⁷ C⁷ G C⁷ G G⁷ D⁷ #⁹ Eb⁷ #⁹ D⁷ #⁹ G⁷

C **D** 4

50

C⁷ G C⁷ G G⁷ D⁷ #⁹ Eb⁷ #⁹ D⁷ #⁹ G⁷

E 4 **F** Chorus 4

67

C⁷ G C⁷ G G⁷ D⁷ #⁹ Eb⁷ #⁹ D⁷ #⁹ G⁷

75

G⁷ C⁷ G G⁷ D⁷ #⁹ Eb⁷ #⁹ D⁷ #⁹ G⁷

G **H** Chorus 3

89

G⁷ rit.

All Blues

Composer: Miles Davis

arr: C. Helmreich

Intro

A

11



The sea the sky the you and I
The color of colors The blues are more than a color



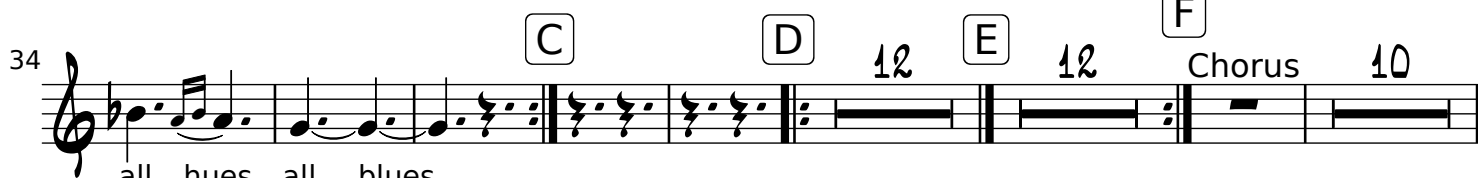
sea and sky, and you and I weare all the blues All Shades all hues,
They're moan of pain A Taste of strife And a sad re - frain Blues can be the livin' dues



all blues Some blues are sad But some are glad
we all are singin' yeah oh lord In a rain - bow A summer day that's fair



Dark and sad or bright and glad They are all blues All shades,
A prayer is prayed A lament that's made Some shade of blues is there Blue heaven's



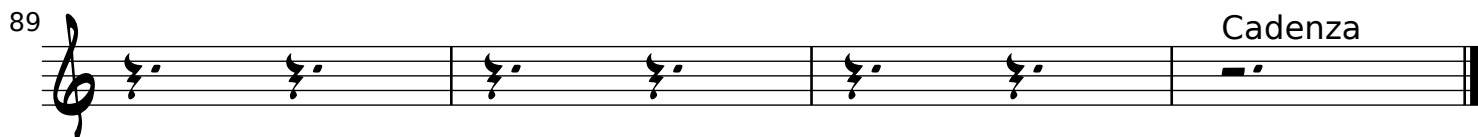
all hues, all blues
hue They're all blues!



Talkin' 'bout the sea and the sky andi'm talkin' 'bout you and I



the sea, the sky for you and I and I know we're all blues All shades all hues all blues



Cadenza