

# Messe

## Kyrie

Composer: C. Helmreich

arr: J. Stroeher

**Leggiero**

tp1

7

14

22

30

# Messe

## Gloria

Composer: C. Helmreich

arr: J. Stroehrer

**Maestoso**

tp1

5

10

15

20

24

29

# Messe

## Credo

Composer: C. Helmreich

arr: J. Stroehrer

**Allegro non Troppo**

tp1

1

6

6

12

12

17

17

23

23

28

28

# Messe

## Sanctus

Composer: C. Helmreich

arr: J. Stroher

**Energico**

tp1



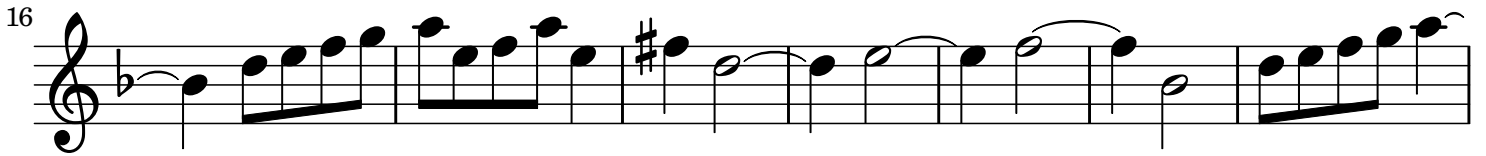
*f*

8

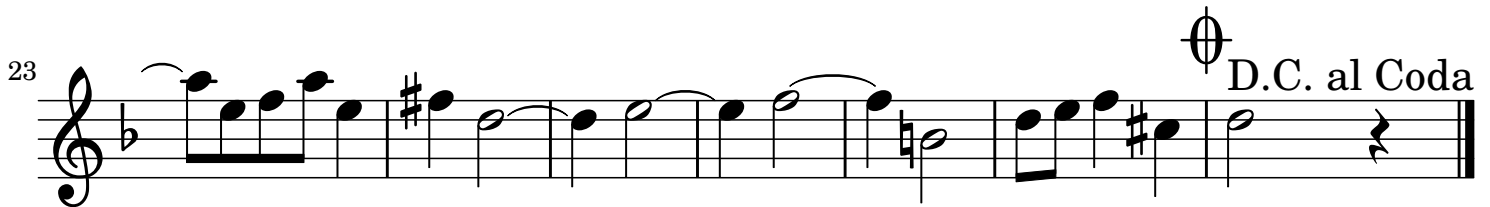


*p*

16

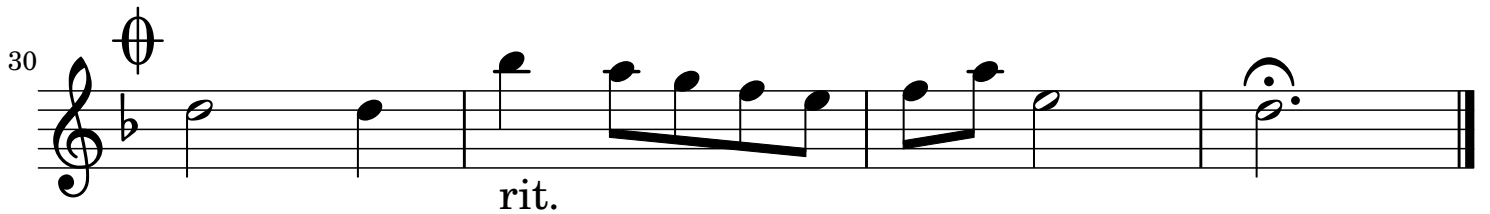


23



D.C. al Coda

30



rit.

# Messe

## Benedictus

Composer: C. Helmreich

arr: J. Stroeher

**Vivo**

tp1

6

12

18

24

30

# Messe

## Agnus

Composer: C. Helmreich

arr: J. Stroehrer

**Allegretto**

tp1 *f*

6 *mf*

11

17 *f*

23 *mf* Fine

29

36 DC al Fine con rep.

# Messe

## Kyrie

Composer: C. Helmreich

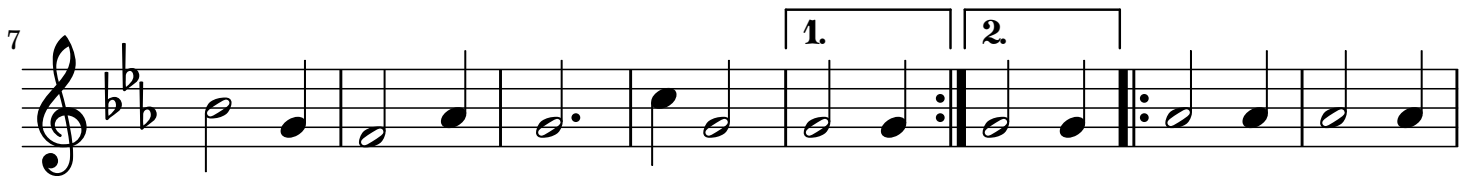
arr: J. Stroehrer

**Leggiero**

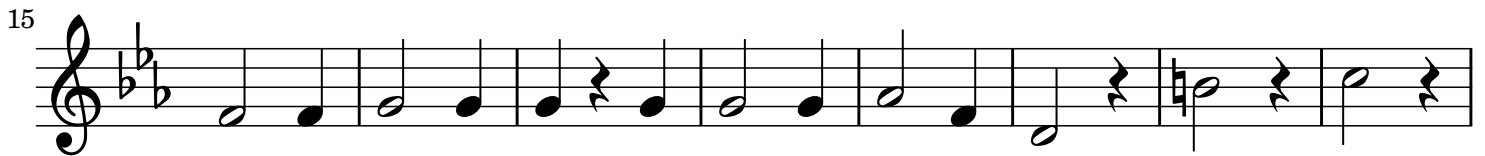
tp2



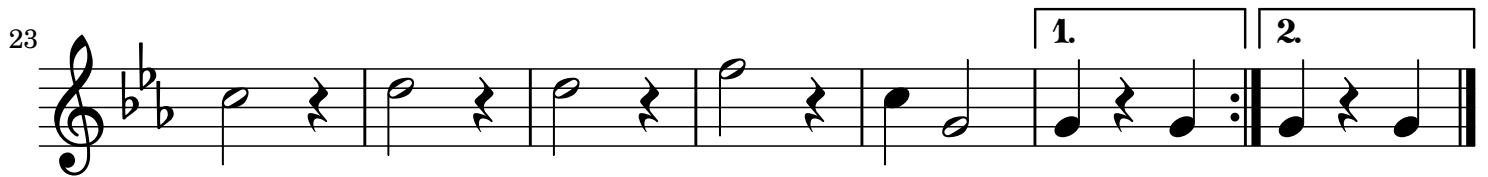
7



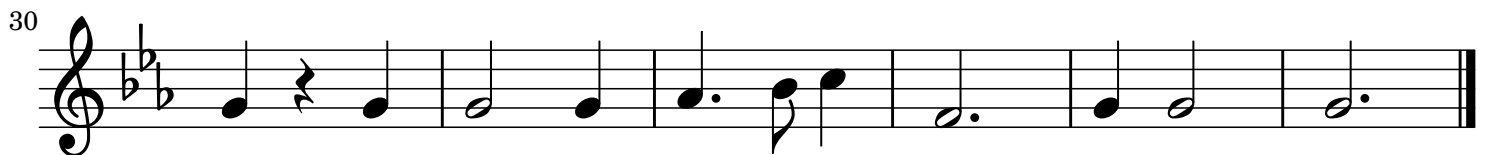
15



23



30



# Messe

## Gloria

Composer: C. Helmreich

arr: J. Stroehrer

**Maestoso**

tp2

6

12

18

6

28

1. 2.



# Messe

## Credo

Composer: C. Helmreich

arr: J. Stroehrer

**Allegro non Troppo**

tp2



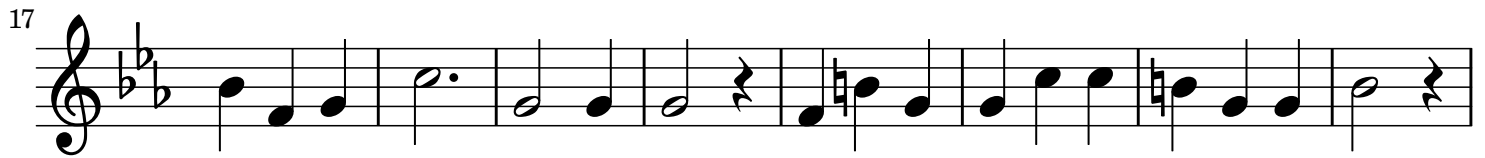
6



12



17



25



# Messe

## Sanctus

Composer: C. Helmreich

arr: J. Stroehrer

**Energico**

tp2



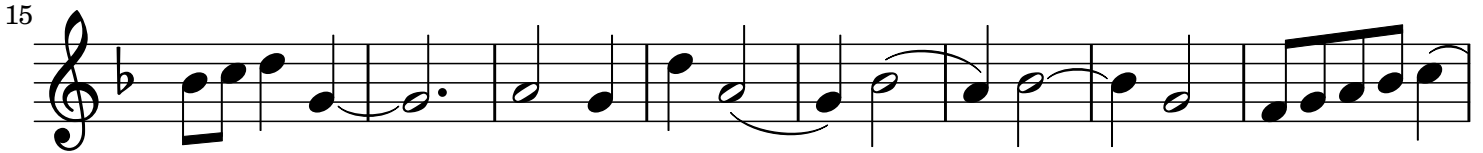
*f*

9

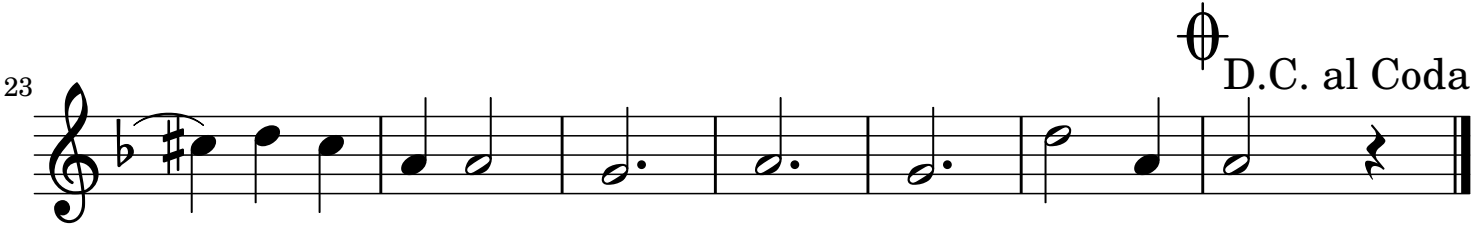


*p*

15

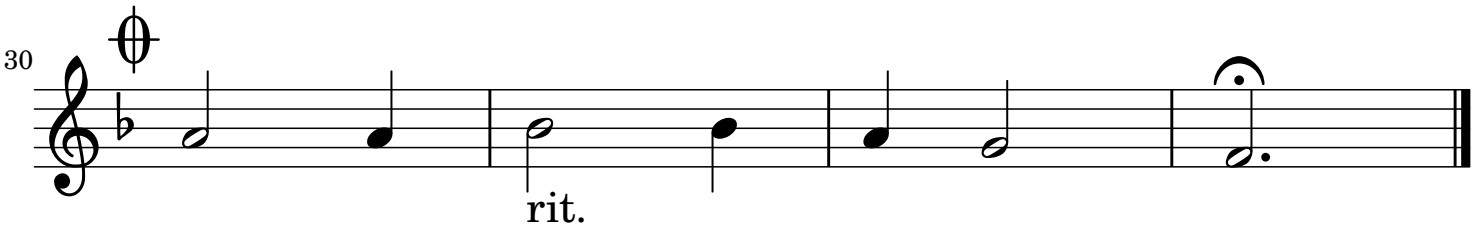


23



⊖ D.C. al Coda

30



rit.

# Messe

## Benedictus

Composer: C. Helmreich

arr: J. Stroehrer

**Vivo**

tp2

*f*

6

12

19

25

DC al Coda

30

# Messe

## Agnus

Composer: C. Helmreich

arr: J. Stroeher

**Allegretto**

1.

tp2

*f*

6

2.

*mf*

11

18

24

Fine

*mf*

30

36

DC al Fine con rep.

*mf*

# Messe

## Kyrie

Composer: C. Helmreich

arr: J. Stroehrer

**Leggiero**

tp3

Measures 1-6

7

Measures 7-14

15

Measures 15-22

23

Measures 23-29

30

Measures 30-36

# Messe

## Gloria

Composer: C. Helmreich

arr: J. Stroher

**Maestoso**

tp3

6

11

17

6

28

1. 2.

# Messe

## Credo

Composer: C. Helmreich

arr: J. Stroehrer

**Allegro non Troppo**

tp3

Musical notation for trumpet 3, measures 1-5. The staff is in G major (one flat) and 3/4 time. It begins with a repeat sign. The melody consists of quarter and eighth notes.

6

Musical notation for trumpet 3, measures 6-11. The melody continues with quarter and eighth notes, ending with a fermata.

12

Musical notation for trumpet 3, measures 12-16. The melody continues with quarter and eighth notes, ending with a fermata.

17

Musical notation for trumpet 3, measures 17-24. The melody continues with quarter and eighth notes, ending with a fermata.

25

Musical notation for trumpet 3, measures 25-30. The melody continues with quarter and eighth notes, ending with a fermata.

# Messe

## Sanctus

Composer: C. Helmreich

arr: J. Stroehrer

**Energico**

tp3

*f*

8

2

*p*

16

23

D.C. al Coda

30

*rit.*



# Messe

## Benedictus

Composer: C. Helmreich

arr: J. Stroher

**Vivo**

tp3

*f*

6

12

1. 2.

19

*p*

25

2. DC al Coda

30

# Messe

## Agnus

Composer: C. Helmreich

arr: J. Stroehrer

**Allegretto**

tp3

*f*

1.

7

2.

*mf*

14

*f*

21

Fine

*mf*

28

35

DC al Fine con rep.

# Messe

## Kyrie

Composer: C. Helmreich

arr: J. Stroehrer

**Leggiero**

horn

Musical notation for horn, measures 1-6. The key signature has three flats (B-flat, E-flat, A-flat) and the time signature is 3/4. The notation includes a repeat sign at the beginning and a slur over measures 4 and 5.

7

Musical notation for horn, measures 7-14. Measure 7 is the start of a first ending. Measures 8-10 are the first ending. Measure 11 is the start of a second ending. Measures 12-14 are the second ending.

15

Musical notation for horn, measures 15-22. The notation features eighth notes and quarter notes with accents.

23

Musical notation for horn, measures 23-30. Measure 23 is the start of a first ending. Measures 24-29 are the first ending. Measure 30 is the start of a second ending. Measures 31-32 are the second ending.

30

Musical notation for horn, measures 30-37. The notation includes quarter notes, eighth notes, and a final cadence.

# Messe

## Gloria

Composer: C. Helmreich

arr: J. Stroehrer

**Maestoso**

horn

1. Musical staff for horn, measures 1-5. Treble clef, key signature of three flats (B-flat, E-flat, A-flat), 3/4 time signature. The staff contains a series of eighth and quarter notes with rests, starting with a repeat sign.

6. Musical staff for horn, measures 6-10. Treble clef, key signature of three flats. The staff contains a series of eighth and quarter notes with rests.

11. Musical staff for horn, measures 11-16. Treble clef, key signature of three flats. The staff contains a series of quarter and eighth notes with rests, ending with a repeat sign.

17. Musical staff for horn, measures 17-27. Treble clef, key signature of three flats. The staff contains a series of quarter and eighth notes with rests, including a six-measure rest marked with the number 6.

28. Musical staff for horn, measures 28-32. Treble clef, key signature of three flats. The staff contains a series of quarter and eighth notes with rests, ending with a first and second ending bracket.

# Messe

## Credo

Composer: C. Helmreich

arr: J. Stroehrer

**Allegro non Troppo**

horn

Musical notation for horn, measures 1-5. Treble clef, key signature of three flats (B-flat, E-flat, A-flat), 3/4 time signature. The melody starts with a repeat sign and consists of eighth and quarter notes.

6

Musical notation for horn, measures 6-11. Treble clef, key signature of three flats. The melody continues with quarter and eighth notes.

12

Musical notation for horn, measures 12-16. Treble clef, key signature of three flats. The melody continues with quarter and eighth notes, ending with a repeat sign.

17

Musical notation for horn, measures 17-24. Treble clef, key signature of three flats. The melody continues with quarter and eighth notes.

25

Musical notation for horn, measures 25-30. Treble clef, key signature of three flats. The melody continues with quarter and eighth notes, ending with a repeat sign.

# Messe

## Sanctus

Composer: C. Helmreich

arr: J. Stroehrer

**Energico**

horn

*f*

8

*p*

16

23

$\text{C}$  D.C. al Coda

30

rit.

# Messe

## Benedictus

Composer: C. Helmreich

arr: J. Stroehrer

**Vivo**

horn

*f*

6

12

1. 2.

19

*p* 1.

25

2. DC al Coda

30

# Messe

## Agnus

Composer: C. Helmreich

arr: J. Stroehrer

**Allegretto**

horn

1.

7

2.

*mf*

14

*f*

21

Fine

*mf*

28

2/4

35

DC al Fine con rep.



# Messe

## Kyrie

Composer: C. Helmreich

arr: J. Stroehrer

**Leggiero**

tb2

1. 2.

7

1. 2.

15

23

1. 2.

30

# Messe

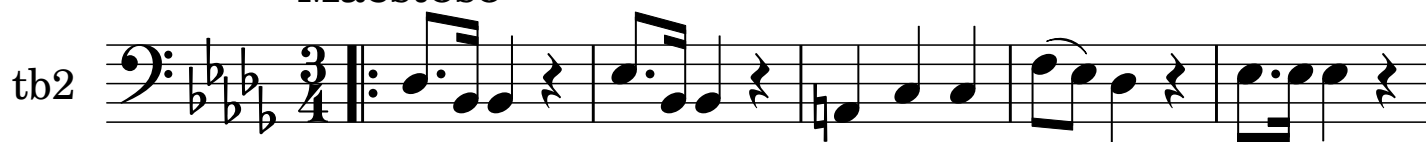
## Gloria

Composer: C. Helmreich

arr: J. Stroehrer

**Maestoso**

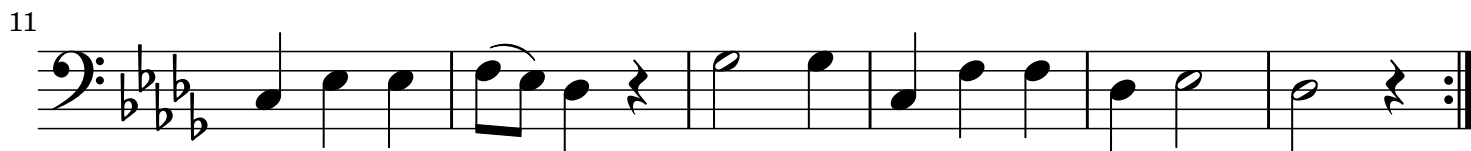
tb2



6

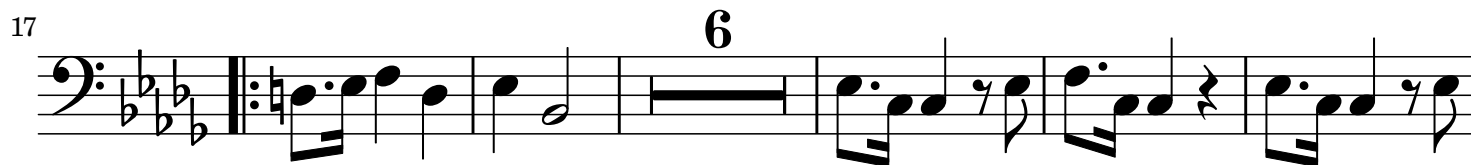


11

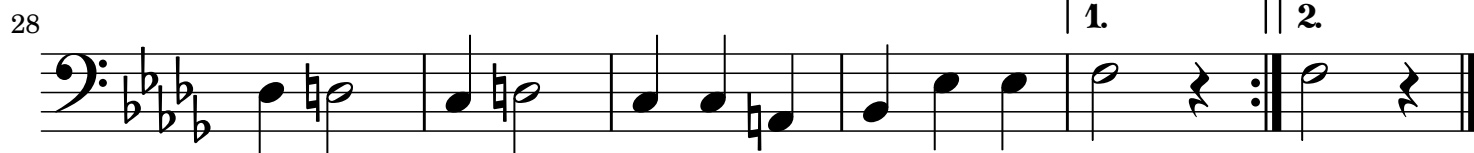


17

6



28



1. 2.

# Messe

## Credo

Composer: C. Helmreich

arr: J. Stroehrer

### Allegro non Troppo

tb2

Measures 1-5: Musical notation for tuba 2, starting with a repeat sign and a 3/4 time signature.

6

Measures 6-11: Musical notation for tuba 2, including a quarter rest in measure 7.

12

Measures 12-16: Musical notation for tuba 2, ending with a double bar line and repeat dots.

17

Measures 17-24: Musical notation for tuba 2.

25

Measures 25-30: Musical notation for tuba 2, ending with a double bar line and repeat dots.

# Messe

## Sanctus

Composer: C. Helmreich

arr: J. Stroehrer

### Energico

tb2

*f*

8

*p*

16

23

D.C. al Coda

30

*rit.*

# Messe

## Benedictus

Composer: C. Helmreich

arr: J. Stroehrer

**Vivo**

tb2

*f*

6

12

19

25

30

# Messe

## Agnus

Composer: C. Helmreich

arr: J. Stroehrer

**Allegretto**

1.

tb2

*f*

6

2.

*mf*

12

18

*f*

24

Fine

*mf*

30

36

DC al Fine con rep.

# Messe

## Kyrie

Composer: C. Helmreich

arr: J. Stroehrer

**Leggiero**

tb

Measures 1-6 of the tuba part. The key signature has three flats (B-flat, E-flat, A-flat) and the time signature is 3/4. The notation includes a repeat sign at the beginning and various note values including quarter notes, eighth notes, and dotted notes.

7

Measures 7-14 of the tuba part. Measure 10 contains a first ending bracket labeled '1.' and a second ending bracket labeled '2.'. The notation continues with quarter and eighth notes.

15

Measures 15-22 of the tuba part. The notation features a mix of quarter and eighth notes, with some rests and slurs.

23

Measures 23-29 of the tuba part. Measure 28 contains a first ending bracket labeled '1.' and a second ending bracket labeled '2.'. The notation includes eighth-note patterns and quarter notes.

30

Measures 30-36 of the tuba part. The notation consists of quarter notes and dotted notes, ending with a double bar line.

# Messe

## Gloria

Composer: C. Helmreich

arr: J. Stroeher

**Maestoso**

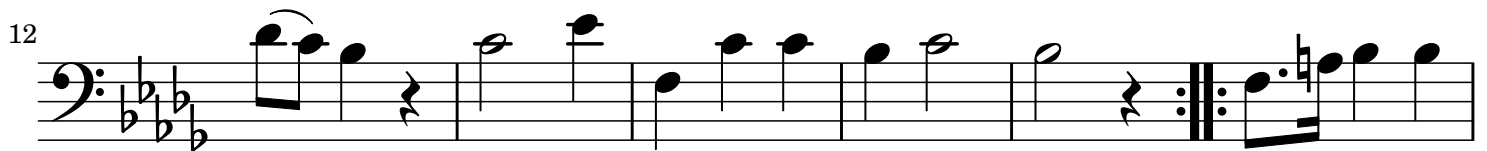
tb



6



12



18



28





# Messe

## Credo

Composer: C. Helmreich

arr: J. Stroehrer

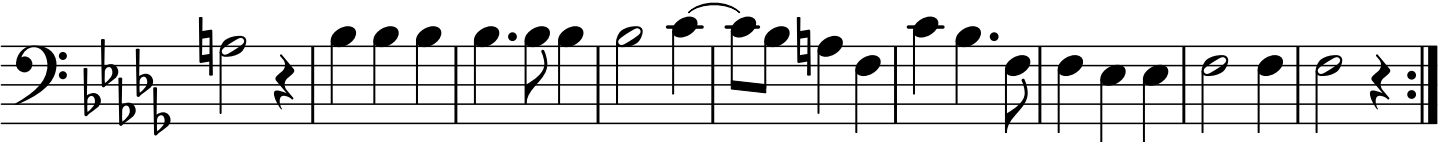
**Allegro non Troppo**

tb



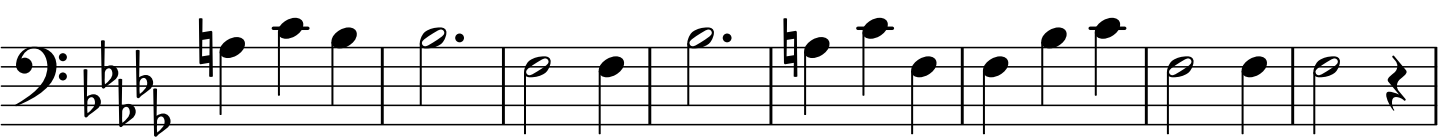
First line of musical notation for tuba (tb). It begins with a bass clef, a key signature of three flats (B-flat, E-flat, A-flat), and a 3/4 time signature. The music starts with a repeat sign and contains seven measures of music.

8



Second line of musical notation for tuba, starting at measure 8. It continues the piece with ten measures of music.

17



Third line of musical notation for tuba, starting at measure 17. It continues the piece with eight measures of music.

25



Fourth line of musical notation for tuba, starting at measure 25. It continues the piece with eight measures of music, ending with a double bar line.

# Messe

## Sanctus

Composer: C. Helmreich

arr: J. Stroehrer

**Energico**

tb

*f*

9

*p*

20

D.C. al Coda

30

*rit.*

# Messe

## Benedictus

Composer: C. Helmreich

arr: J. Stroehrer

**Vivo**

tb

*f*

6

12

1. 2.

19

*p*

25

2. DC al Coda

30

# Messe

## Agnus

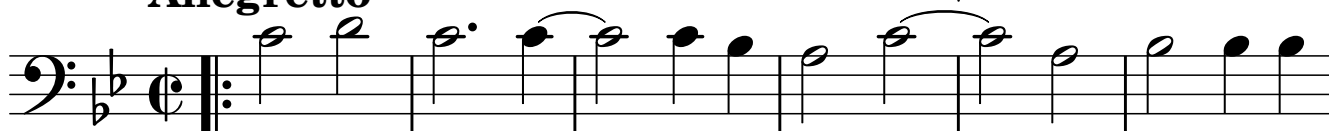
Composer: C. Helmreich

arr: J. Stroehrer

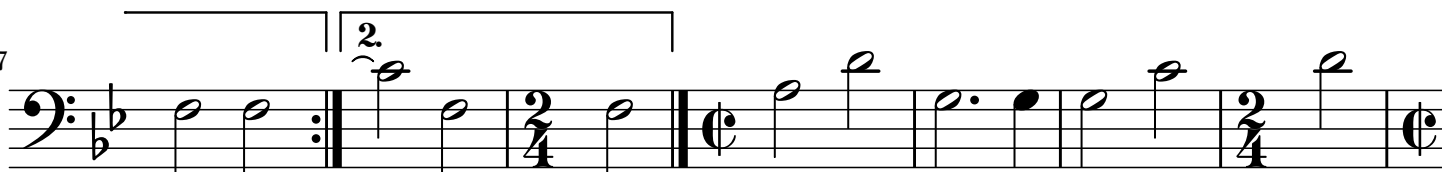
**Allegretto**

1.

tb

*f*

7

*mf*

14

*f*

21

*mf*

28



35



DC al Fine con rep.

# Messe

## Kyrie

Composer: C. Helmreich

arr: J. Stroehrer

**Leggiero**

tuba

Measures 1-5: tuba part, starting with a repeat sign and a first ending bracket over the final two measures.

6

Measures 6-12: tuba part, including a first ending bracket over measures 10-11 and a second ending bracket over measure 12.

13

Measures 13-19: tuba part, starting with a repeat sign and continuing with various note values.

20

Measures 20-24: tuba part, featuring eighth and sixteenth note patterns.

25

Measures 25-29: tuba part, including a first ending bracket over measures 27-28 and a second ending bracket over measure 29.

30

Measures 30-36: tuba part, concluding with a final cadence.

# Messe

## Gloria

Composer: C. Helmreich

arr: J. Stroher

**Maestoso**

tuba

1 2 3 4 5

6

6 7 8 9 10

13

11 12 13 14 15

20

16 17 18 19

27

20 21 22 23 24 25 26

1. 2.

# Messe

## Credo

Composer: C. Helmreich

arr: J. Stroeher

### Allegro non Troppo

tuba

9

17

25





# Messe

## Benedictus

Composer: C. Helmreich

arr: J. Stroehrer

**Vivo**

tuba

*f*

7

15

1. 2. *p*

23

1. 2. DC al Coda

30

# Messe

## Agnus

Composer: C. Helmreich

arr: J. Stroehrer

**Allegretto**

1.

tuba

*f*

6

2.

*mf*

12

18

24

Fine

*mf*

30

36

DC al Fine con rep.

*mf*