

DUETTO

1st TRUMPET

CHRISTIAN HELMREICH

A



Measures 1-5: Musical notation for the first system, starting with a treble clef, key signature of two sharps (F# and C#), and a 4/4 time signature. The music begins with a double bar line, followed by a quarter rest, then a sequence of eighth and quarter notes. Measure 4 contains a repeat sign.

6



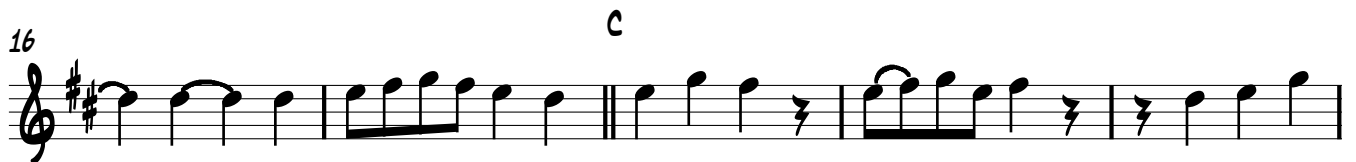
Measures 6-10: Musical notation for the second system. Measures 6-10 continue the melodic line with eighth and quarter notes. Measure 9 includes a fermata and a dynamic marking symbol. Measure 10 ends with a double bar line.

11



Measures 11-15: Musical notation for the third system. Measures 11-15 consist of a series of eighth notes with slurs, all within a single line of music.

16



Measures 16-20: Musical notation for the fourth system. Measures 16-20 continue the eighth-note sequence. Measure 18 features a fermata and a dynamic marking symbol. Measure 20 ends with a double bar line.

21



Measures 21-23: Musical notation for the fifth system. Measures 21-23 continue the eighth-note sequence. Measure 23 ends with a double bar line.

24



Measures 24-26: Musical notation for the sixth system. Measure 24 contains a double bar line. Measures 25-26 continue the eighth-note sequence. Measure 25 includes a dynamic marking symbol. Measure 26 ends with a double bar line. Above the staff, there are additional markings: "D.C. AL" followed by two dynamic marking symbols, and "RIT." followed by a fermata and a dynamic marking symbol.

DUETTO

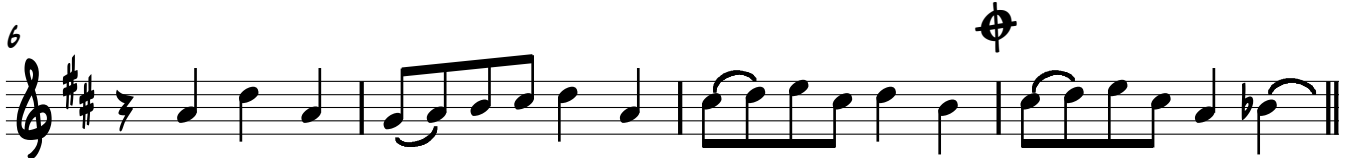
2ND TRUMPET

CHRISTIAN HELMREICH

A



6



10

B



14



18

C



23

D.C. AL  



 RIT.



DUETTO

3RD TRUMPET

CHRISTIAN HELMREICH

A



6



11



16



21



24



DUETTO

CHRISTIAN HELMREICH

A

1st TRUMPET

2nd TRUMPET

3rd TRUMPET

5

TRP. 1

TRP. 2

TRP. 3

B

9

TRP. 1

TRP. 2

TRP. 3

13

TRP. 1

TRP. 2

TRP. 3

17

C

TRP. 1

TRP. 2

TRP. 3

21

TRP. 1

TRP. 2

TRP. 3

24

D.C. AL \oplus - \oplus

RIT.

TRP. 1

TRP. 2

TRP. 3